

BROMLEY

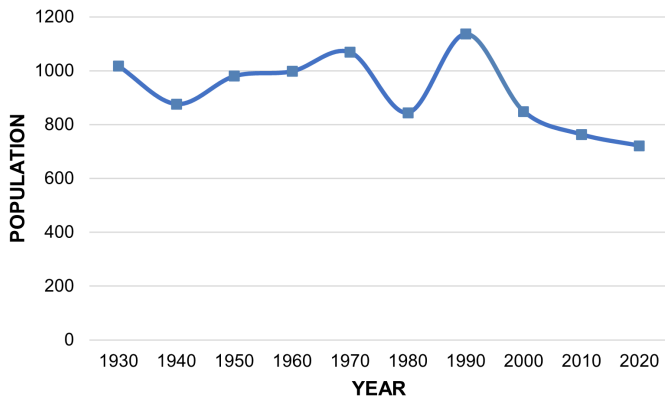
226 Boone Street Bromley, KY 41016 | Phone: 859.261.2498 | Fax: 859.261.6791 | <https://cityofbromley.com/>

Bromley was settled in 1784, when Prettyman Merry received a land grant of 2,000 acres from the United States Government. The Merry family soon after built a home on the property, which still stands today on Shelby Street. The Commonwealth of Kentucky officially approved the incorporation of the City of Bromley on May 23, 1890.

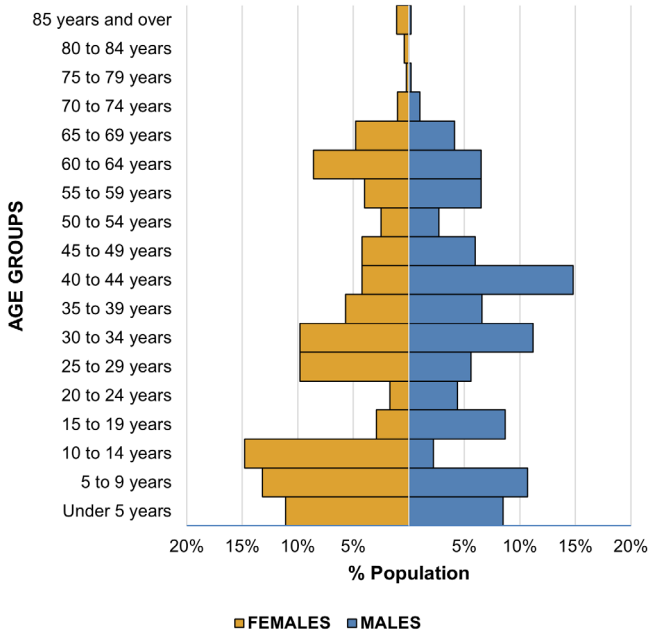
Population

	2010	2021	% Change
Total Population	763	724	-5.11%
Average Household Size	2.41	2.10	-12.86%

Population Trend



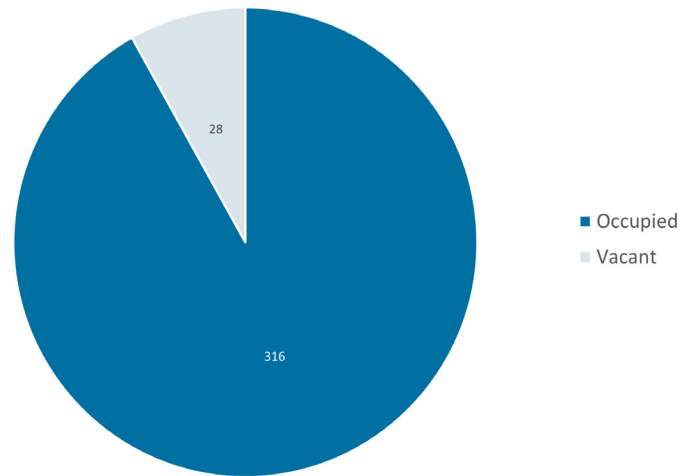
Population Pyramid (2021)



Housing

	2010	2021	% Change
Total Housing Units	354	344	-2.82%
Vacant Units	38	28	-26.31%
Occupied Units	316	316	0%

Housing Units (2021)



Cincinnati MSA

	2010	2020	% Change
Total Population	2,130,151	2,256,884	5.95%

Kentucky

	2010	2020	% Change
Total Population	4,339,367	4,505,836	3.84%



Land Area (2021)

Total (acres)	322.34
Persons Per Acre	2.24

Sources:

U.S. Census Bureau | datacommons.org | <https://cityofbromley.com/> | LINK-GIS

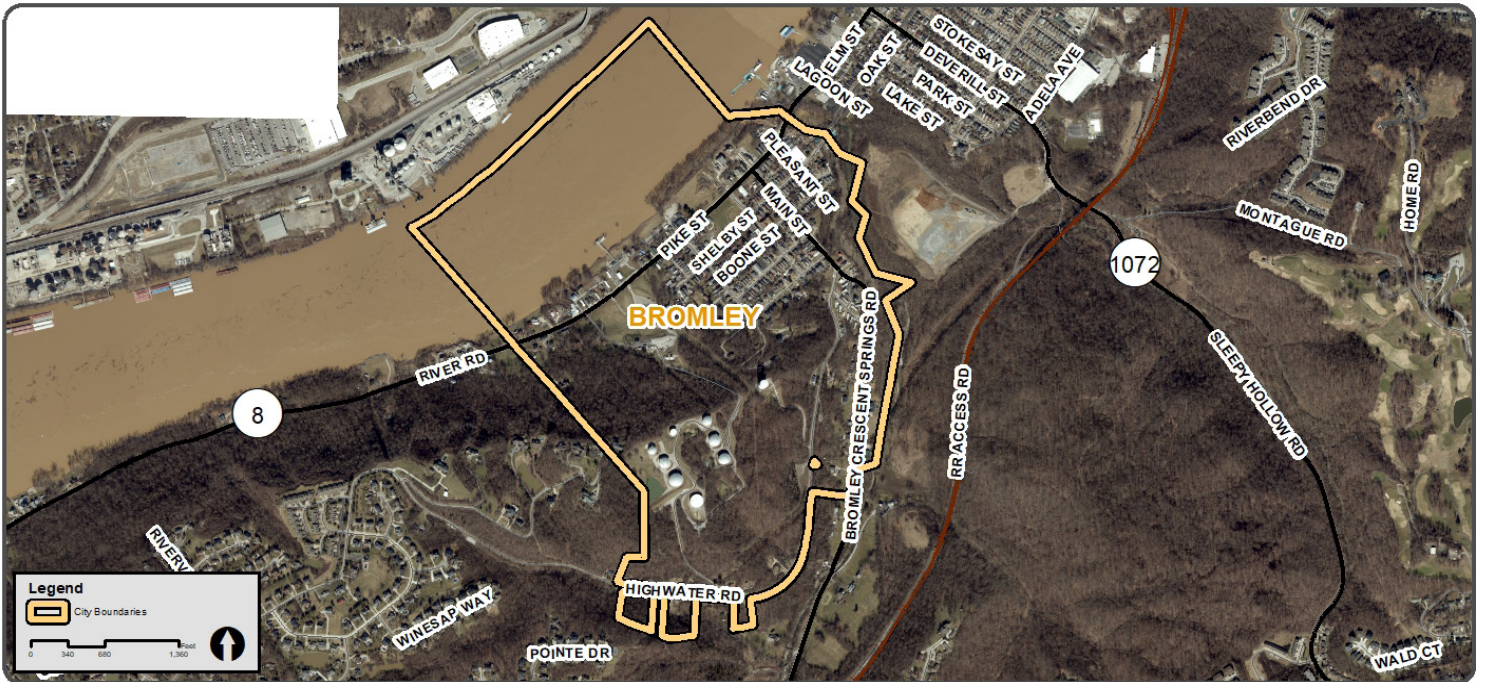
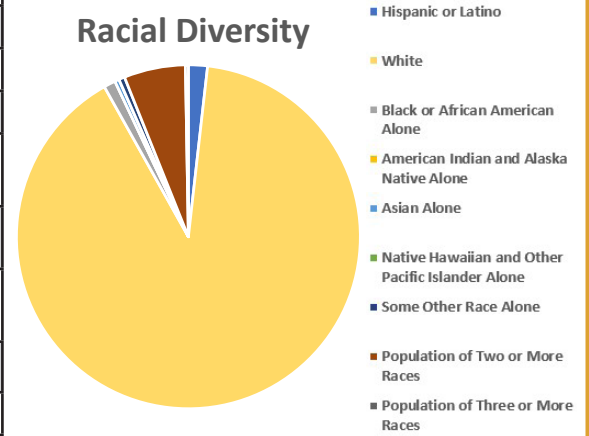
BROMLEY

226 Boone Street Bromley, KY 41016 | Phone: 859.261.2498 | Fax: 859.261.6791 | <https://cityofbromley.com/>

Diversity

	Population	Percent of Population
Total Population	724	100.00%
Hispanic or Latino	13	1.80%
White	654	90.33%
Black or African American Alone	8	1.10%
American Indian and Alaska Native Alone	0	0.00%
Asian Alone	3	0.41%
Native Hawaiian and Other Pacific Islander Alone	0	0.00%
Some Other Race Alone	4	0.55%
Population of Two or More Races	42	5.80%
Population of Three or More Races	2	0.28%

Racial Diversity



Land Area (2021)

Total (acres) 322.34
Persons Per Acre 2.24

Sources:
 U.S. Census Bureau | datacommons.org | <https://cityofbromley.com/> | LINK-GIS