

# COVINGTON

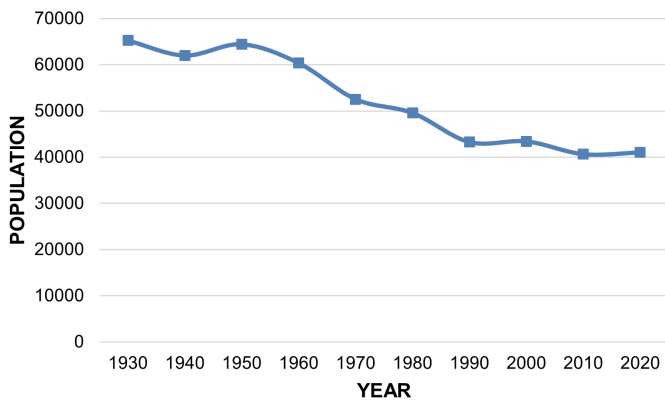
20 West Pike Street Covington, KY 41011 | Phone: 859.292.2160 | <http://www.covingtonky.gov/>

The Town of Covington was named after the Revolutionary War hero, General Leonard Covington, and was established in 1815. Over the years, the area grew and was elevated to its current status as the City of Covington. Today, Covington encompasses the majority of urban land in Kenton County.

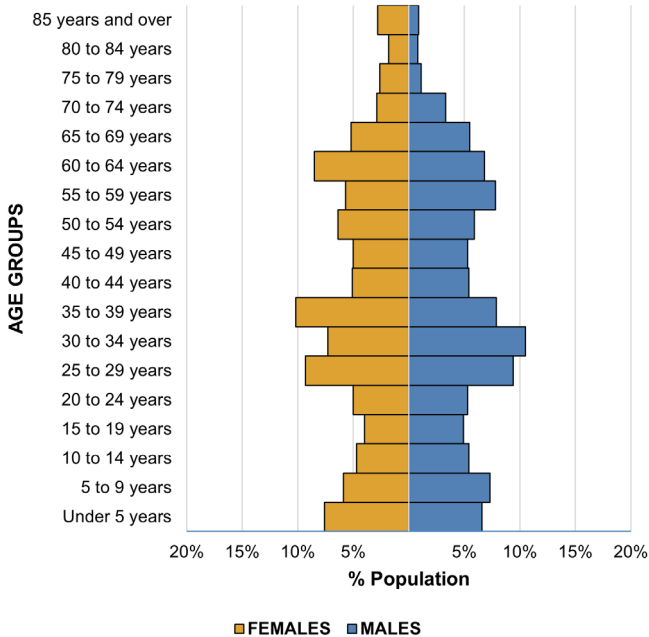
## Population

	2010	2020	% Change
<b>Total Population</b>	41,055	40,961	-0.23%
<b>Average Household Size</b>	2.28	2.27	-0.43%

## Population Trend



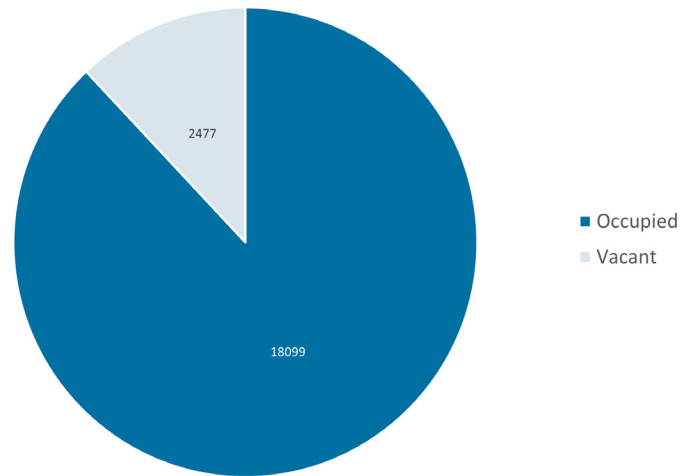
## Population Pyramid (2021)



## Housing

	2010	2020	% Change
<b>Total Housing Units</b>	20,053	20,576	2.61%
<b>Vacant Units</b>	3,020	2,477	-17.98%
<b>Occupied Units</b>	17,033	18,099	6.26%

## Housing Units (2021)



## Cincinnati MSA

	2010	2020	% Change
<b>Total Population</b>	2,130,151	2,256,884	5.95%

## Kentucky

	2010	2020	% Change
<b>Total Population</b>	4,339,367	4,505,836	3.84%



## Land Area (2021)

<b>Total (acres)</b>	8,695.15
<b>Persons Per Acre</b>	4.71

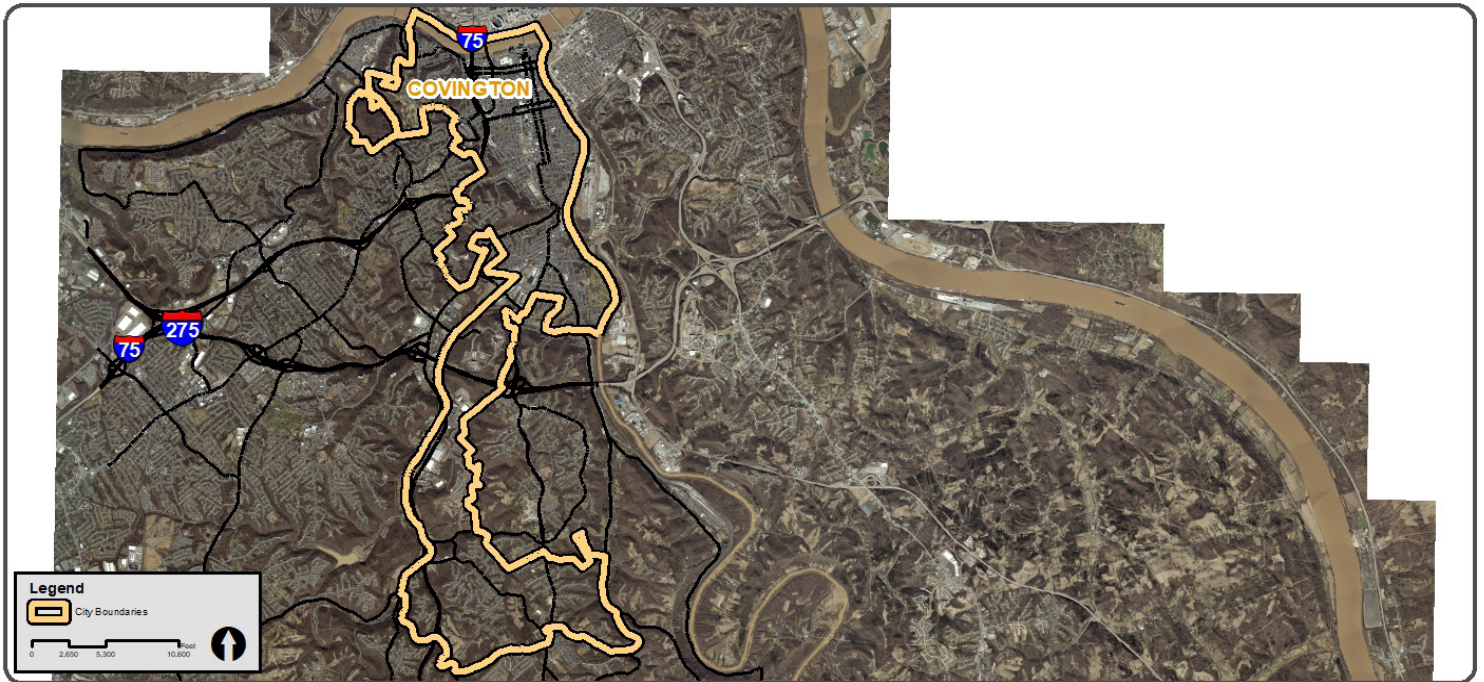
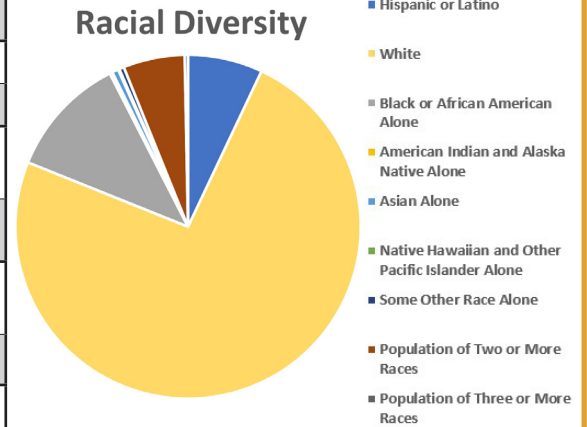
Sources: U.S. Census Bureau | datacommons.org | [www.covingtonky.gov/](http://www.covingtonky.gov/) | LINK-GIS

# COVINGTON

20 West Pike Street Covington, KY 41011 | Phone: 859.292.2160 | <http://www.covingtonky.gov/>

## Diversity

	Population	Percent of Population
<b>Total Population</b>	40,961	100.00%
<b>Hispanic or Latino</b>	2,868	7.00%
<b>White</b>	30,350	74.09%
<b>Black or African American Alone</b>	4,673	11.41%
<b>American Indian and Alaska Native Alone</b>	107	0.26%
<b>Asian Alone</b>	242	0.59%
<b>Native Hawaiian and Other Pacific Islander Alone</b>	48	0.12%
<b>Some Other Race Alone</b>	184	0.45%
<b>Population of Two or More Races</b>	2,489	5.77%
<b>Population of Three or More Races</b>	125	0.31%



## Land Area (2021)

**Total (acres)** 8,695.15  
**Persons Per Acre** 4.71

Sources:  
 U.S. Census Bureau | [datacommons.org](http://datacommons.org) | [www.covingtonky.gov](http://www.covingtonky.gov) | LINK-GIS