

ELSMERE

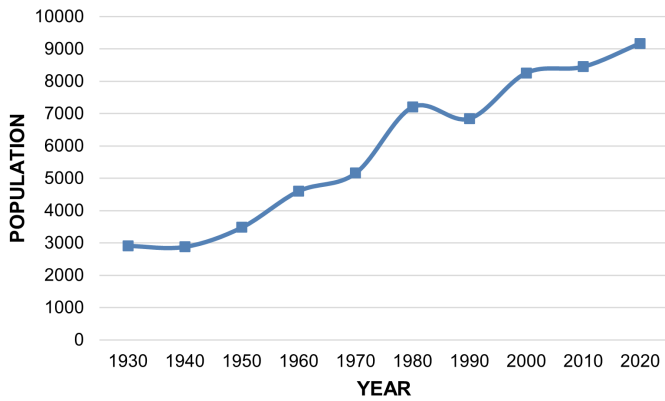
318 Garvey Avenue Elsmere, KY 41018 | Phone: 859.342.7911 | <http://www.cityofelsmere.com/>

The area of Elsmere, formerly known as South Erlanger, became notable as soon as it was announced that a bridge would be built over the Ohio River. In 1896, South Erlanger was incorporated as the City of Elsmere. Elsmere has since transformed from a small railroad community to a major suburb.

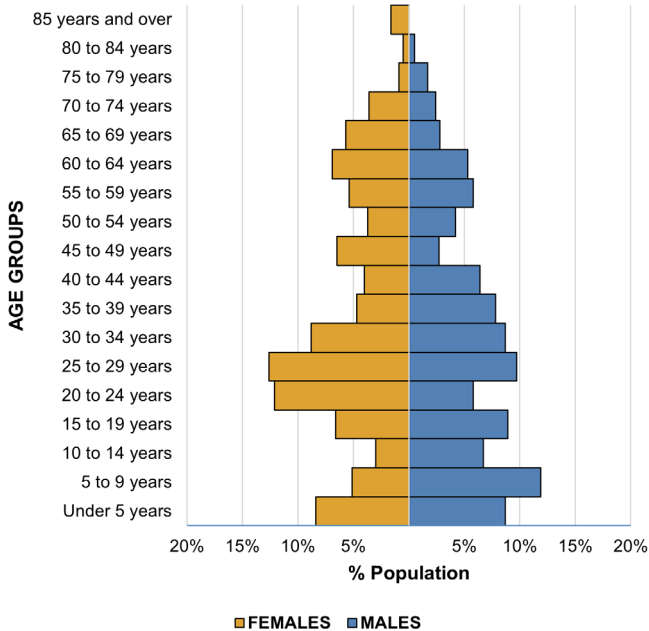
Population

	2010	2020	% Change
Total Population	8,698	9,159	5.30%
Average Household Size	2.91	2.77	-4.81%

Population Trend



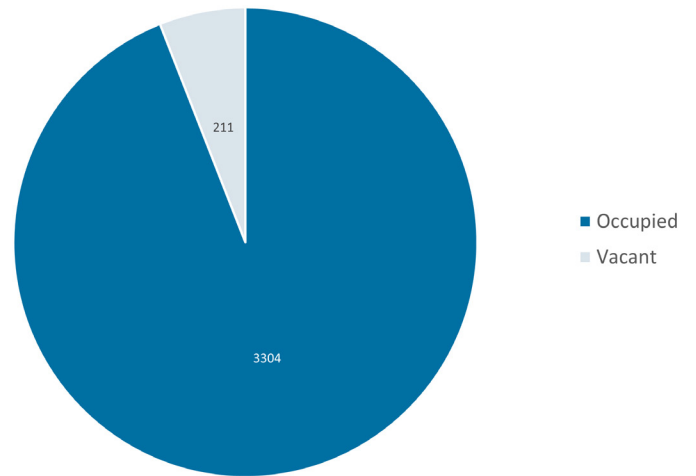
Population Pyramid (2021)



Housing

	2010	2020	% Change
Total Housing Units	3,263	3,515	7.72%
Vacant Units	271	211	-22.14%
Occupied Units	2,992	3,304	10.43%

Housing Units (2021)



Cincinnati MSA

	2010	2020	% Change
Total Population	2,130,151	2,256,884	5.95%

Kentucky

	2010	2020	% Change
Total Population	4,339,367	4,505,836	3.84%



Land Area (2021)

Total (acres)	1,679.33
Persons Per Acre	5.45

Sources:

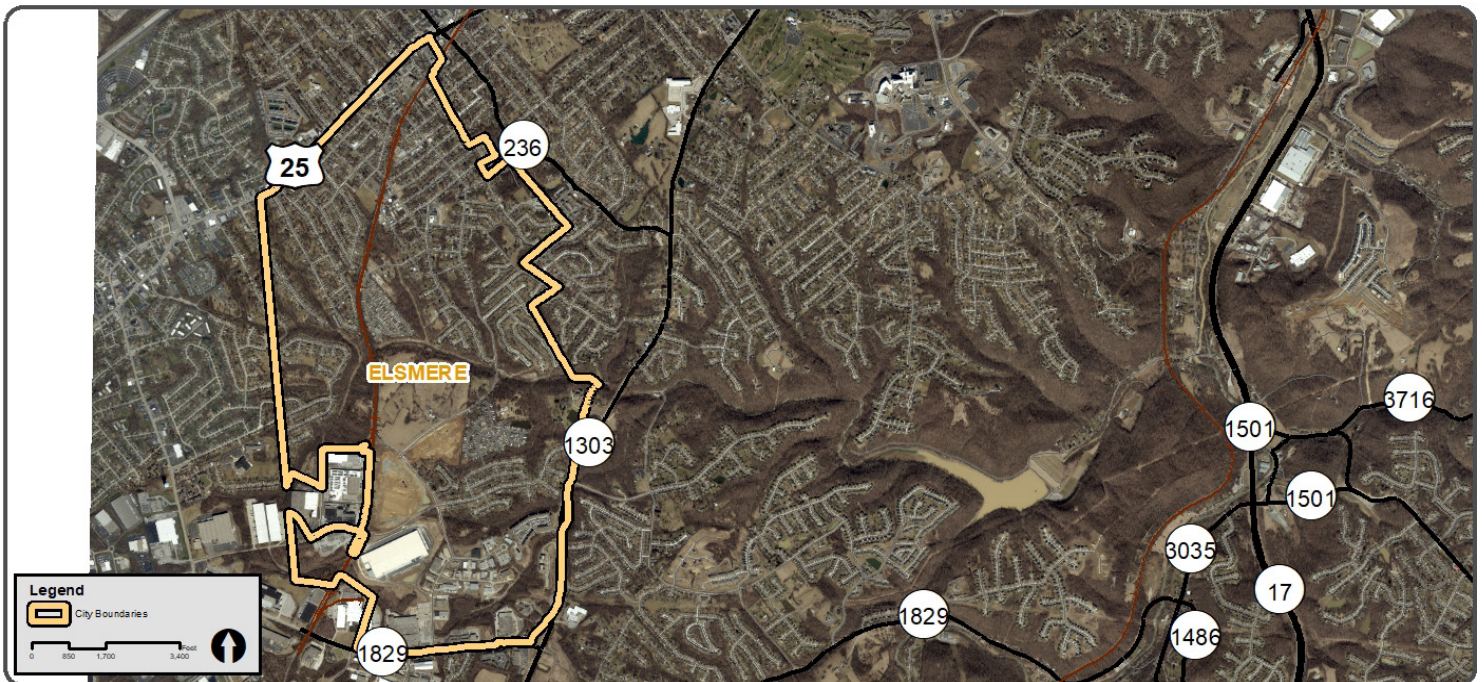
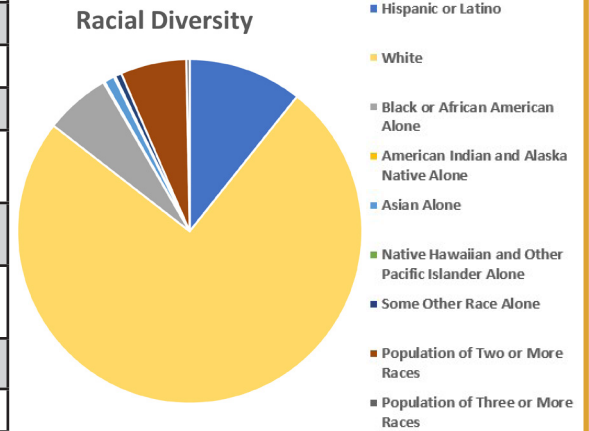
U.S. Census Bureau | datacommons.org | <http://www.cityofelsmere.com/>

ELSMERE

318 Garvey Avenue Elsmere, KY 41018 | Phone: 859.342.7911 | <http://www.cityofelsmere.com/>

Diversity

	Population	Percent of Population
Total Population	9,159	100.00%
Hispanic or Latino	979	10.69%
White	6,854	74.83%
Black or African American Alone	561	6.13%
American Indian and Alaska Native Alone	12	0.13%
Asian Alone	89	0.97%
Native Hawaiian and Other Pacific Islander Alone	13	0.14%
Some Other Race Alone	56	0.61%
Population of Two or More Races	567	6.19%
Population of Three or More Races	28	0.31%



Land Area (2021)

Total (acres) 1,679.33
Persons Per Acre 5.45

Sources:
 U.S. Census Bureau | datacommons.org | <http://www.cityofelsmere.com/>