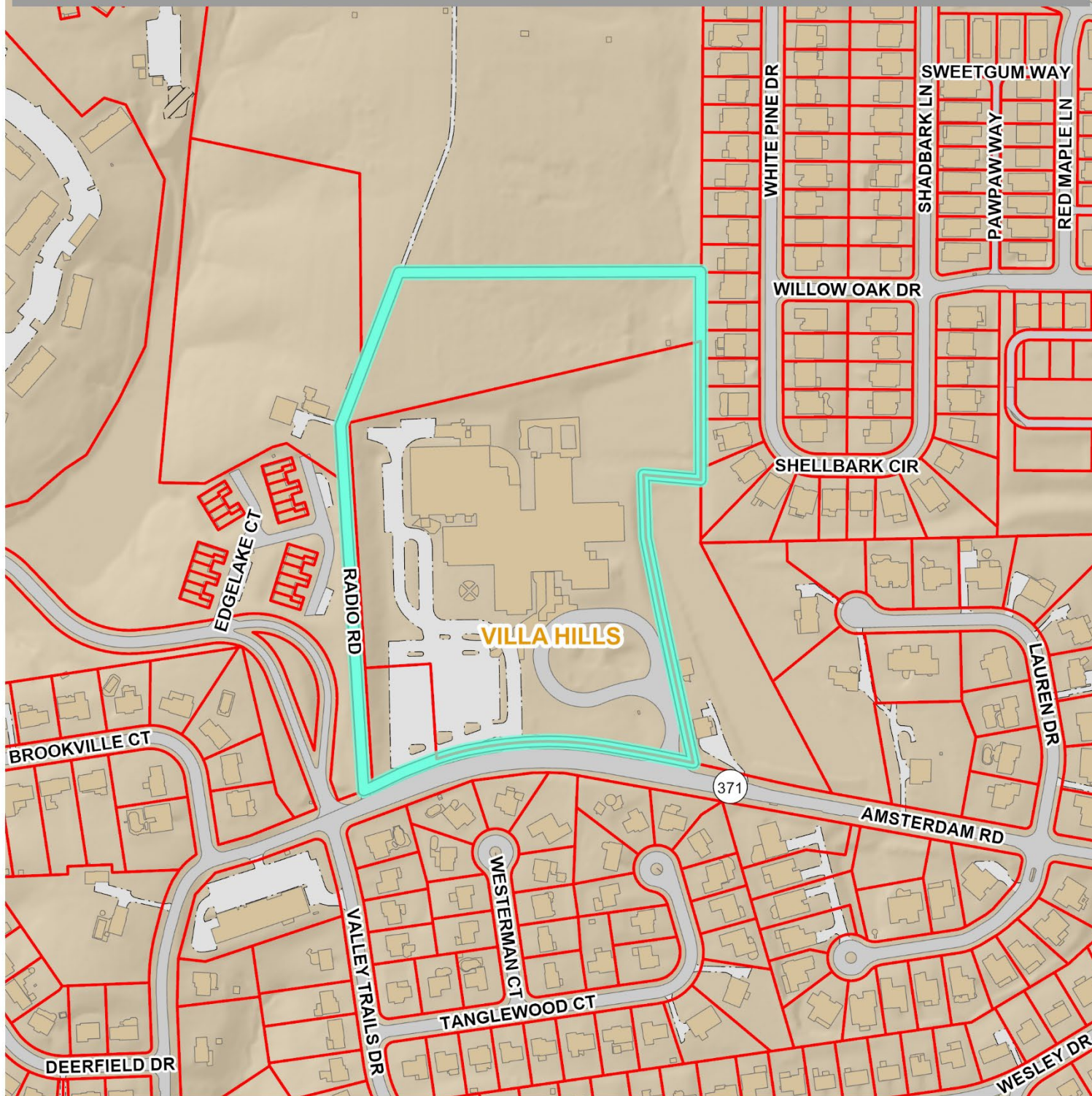




PC-26-0001-PF



VILLA HILLS

371

Building	Roads	Utilities	Topography
Building	Paved Road	Sewer	Index Contour
Pool	Upaved Road	Sewer Structure	Intermediate Contour
Tank	Bridges	Water Pipe	Creek / Stream
Concrete Pad	Paved Parking	Water Hydrant	River / Lake
Recreation	Unpaved Parking		
Ball Fields	Railroad		
Playground/General Rec	Parcel		
Tee/Green	Zoning		

1:3,600



1840 Simon Kenton Way, Suite 3400
 Covington, KY 41011-2999
 859.331.8980
 Office hours M-F 8-5
www.linkgis.org

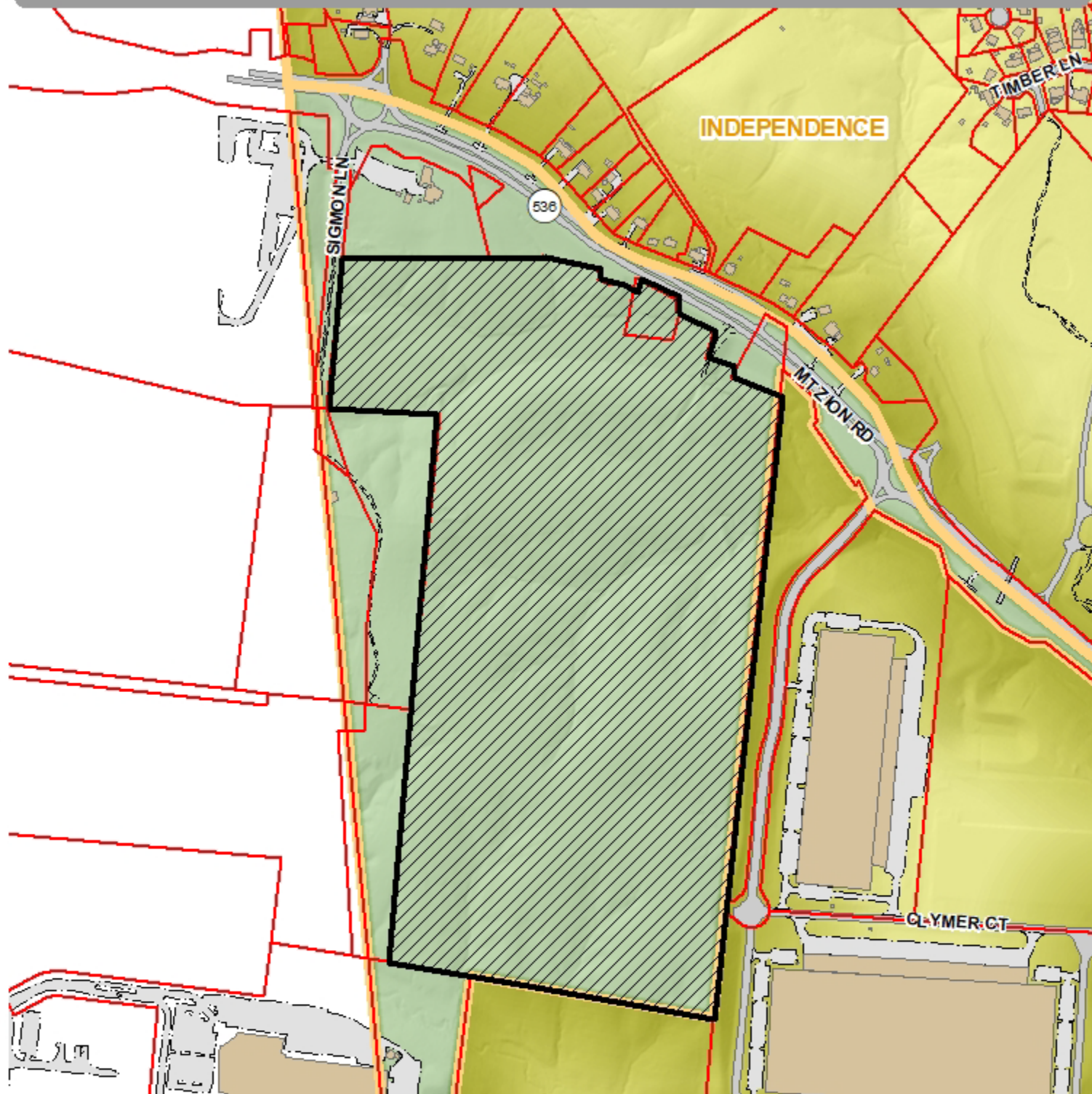
Parcel data provided by CCPVA,
 KCPVA and LINK-GIS.

Date: 3/12/2026

This GIS data are deemed reliable and every effort has been made to ensure their accuracy. They are, however, provided "as is" without warranty of correctness, timeliness, reliability, or completeness. Map elements do not represent a legal survey of land. Use of these data for any purpose should be with an acknowledgement of their limitations, including the fact that they are dynamic in nature and in a constant state of maintenance. Field investigation may be necessary.



PC-26-0003-MA



Building	Roads	Utilities	Topography
Building	Paved Road	Sewer	Index Contour
Pool	Unpaved Road	Sewer Structure	Intermediate Contour
Tank	Bridges	Water Pipe	Creek / Stream
Concrete Pad	Paved Parking	Water Hydrant	River / Lake
Recreation	Unpaved Parking		
Ball Fields	Railroad		
Playground/General Rec			
Tee/Green	Boundaries		
	Parcel		
	Zoning		

1:6,800

1840 Simon Kenton Way, Suite 3400
 Covington, KY 41011-2999
 859.331.8980
 Office hours M-F 8-5
www.linkgis.org

Parcel data provided by CCPVA, KCPVA and LINK GIS.

Date: 3/11/2026

These GIS data are deemed reliable and every effort has been made to ensure their accuracy. They are, however, provided "as is" without warranty of correctness, timeliness, reliability, or completeness. Map elements do not represent a legal survey of land. Use of these data for any purposes should be with an acknowledgement of their limitations, including the fact that they are dynamic in nature and in a constant state of maintenance. Field investigation may be necessary.