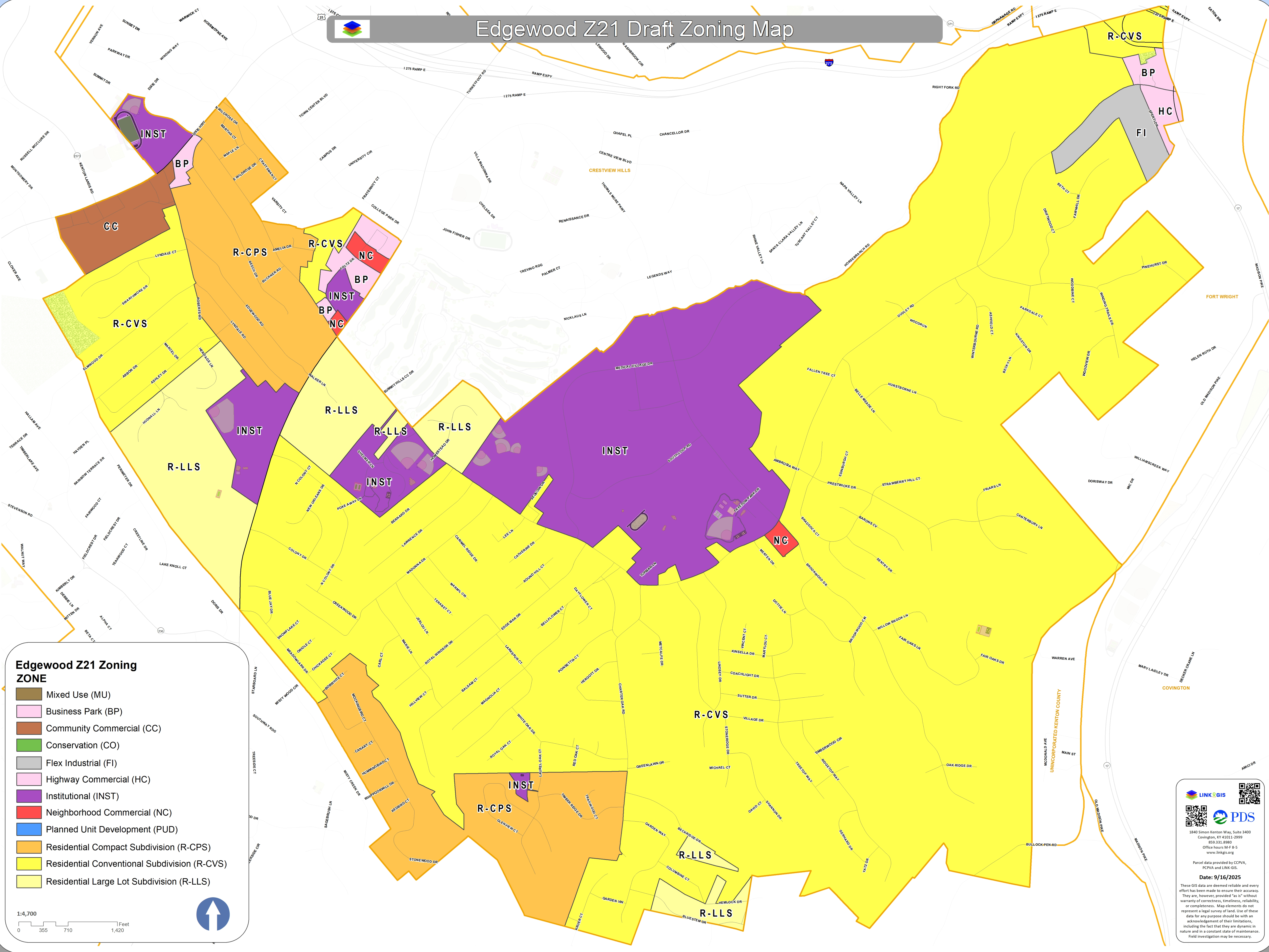
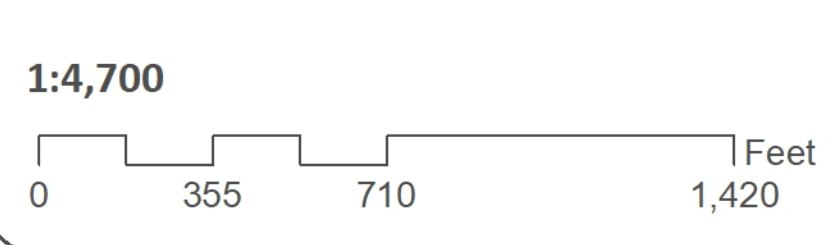


Edgewood Z21 Draft Zoning Map



Edgewood Z21 Zoning ZONE

- Mixed Use (MU)
- Business Park (BP)
- Community Commercial (CC)
- Conservation (CO)
- Flex Industrial (FI)
- Highway Commercial (HC)
- Institutional (INST)
- Neighborhood Commercial (NC)
- Planned Unit Development (PUD)
- Residential Compact Subdivision (R-CPS)
- Residential Conventional Subdivision (R-CVS)
- Residential Large Lot Subdivision (R-LLS)



1840 Simon Kenton Way, Suite 3400
Covington, KY 41011-2999
859.331.9900
Office hours M-F 8-5
www.linkgis.org

Parcel data provided by CCPVA,
PCPVA and LINKGIS.

Date: 9/16/2025

These GIS data are deemed reliable and every effort has been made to ensure their accuracy. They are, however, provided "as is" without warranty of correctness, timeliness, reliability, or completeness. Map elements do not represent a legal survey of land. Use of these data for any purpose should be with an acknowledgment of their limitations, including the fact that they are dynamic in nature and in a constant state of maintenance. Field investigation may be necessary.